



<https://cc-globaltech.com>

sales@cc-globaltech.com

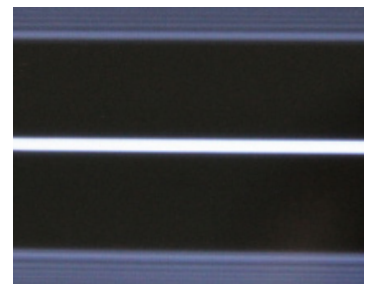
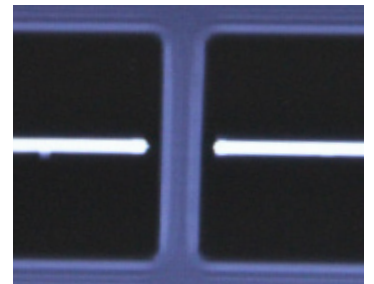
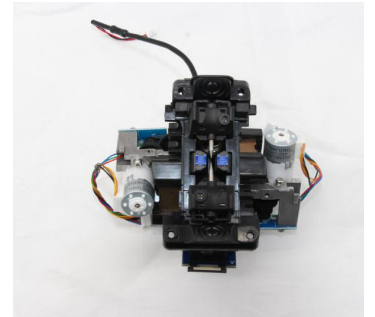
GTS-A4



GTS-A4

Single Fiber Fusion Splicer

- High Cost Performance + Integrated V-groove Deck



Ultra fast
splicing 6sec



Integrated
V-groove deck
assures high
reliability and
vibration-proof



Refreshing User
Interface



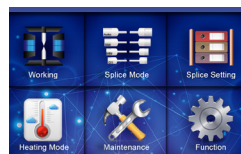
High power LED
lights for dark
environment



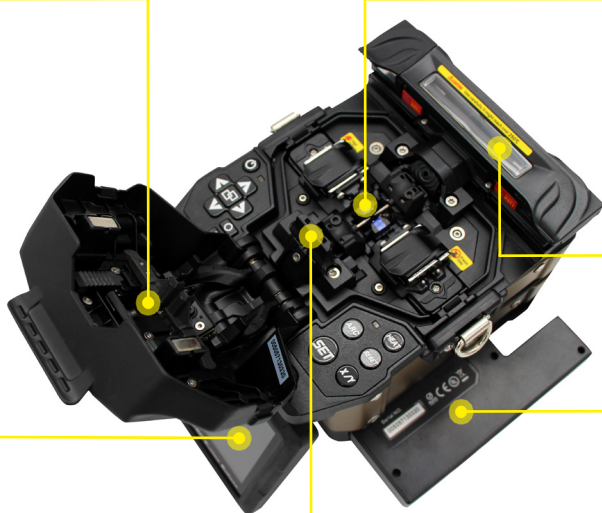
5200mAh
battery, more
than 280 cycles
of splicing and
heating



Robust aluminum alloy wind-protector



4.3 inch touch screen with refreshing UI



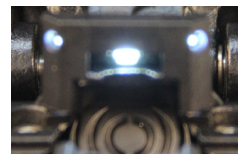
Integrated V-groove deck



Fast heating up to 15s



Battery capacity with 280 cycles



3 LEDs for dark environment

Specifications

Fiber Alignment Method	Cladding to cladding alignment, 4 motors	Illumination	3 high power LED white lights
Fiber Count	Single fiber	Display	Forward/backward switch (button), 4.3 inches 480*272 high resolution color LCD touch screen
Applicable Fiber	SMF (G.652/657), MMF (G.651), DSF (G.653), NZDSF (G.655)	Fiber Image Magnification	X/Y (280X magnification), or both X and Y simultaneously (160X magnification)
Fiber Diameter	250~300um, 900um, 2.0mm, 3.0mm, 2*3mm flat drop cable	Power Supply	100~240VAC, 50/60Hz; 12~15VDC
Fiber Cleaved Length	8~16mm (coating diameter: 125~1000um)	Battery Capacity	5200mAh
Splicing Modes	Total 41 splice modes, can be added by user	Typical Heating Times	280 cycles
Splicing Time	6sec SM FAST	Electrode Life	3,000 ~ 3600 splices
Typical Splice Loss	0.05dB (SM), 0.02dB (MM), 0.08dB (DS) and 0.08dB (NZDS)	Adaptive discharge	Automatic ARC calibration according to air pressure and temperature
Estimated Splice Loss	yes	Terminal	Mini USB 2.0
Return Loss	≥60dB	Operating Condition	Altitude: 0~5,000m, relative humidity: 0~95%, temperature: -10~50 C , Max. wind velocity: 15m/s
Typical Heating Time	15s with 60mm sleeve	Storage Environment	Relative humidity: 0~95%, temperature: -40~80 C
Protective Sleeve Length	20~60mm	Dimension (W*L*H)	140*165*148mm (with rubber housing) 130*165*138mm (without rubber housing)
Tension Test	1.5~2.0N	Net Weight	2.28kg (with rubber housing); 2.08kg (without rubber housing)
Storage of Splice Results	1,000 latest records		

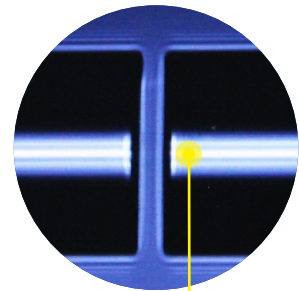
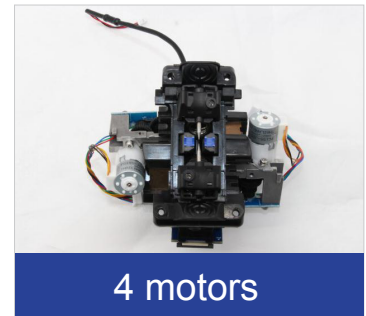
Package

1	Fusion splicer	GTS-A4	1pc
2	Fiber cleaver	ATC-6	1pc
3	Battery	TPW-52	1pc
4	Power adapter	DSS28-1262000	1pc
5	Power cord	APC-XX XX:1=US/JP;2=UK; 3=EU; 4=AU	1pc
6	Spare electrodes	ATE-1	1 pair
7	Cooling tray	ATT-1	1pc
8	Alcohol bottle	AB-10	1pc
9	Brush	BR-01	1pc
10	Phillips screwdriver	PS-01	1pc
11	Manual	ATM-A4	1pc
12	Carrying case	CC-01	1pc
13	Carrying case strap	CCS-01	1pc
14	Fiber optic stripper (optional)	CFS-2	1pc
15	Drop cable stripper (optional)	S30	1pc
16	Kevlar scissors (optional)	FKS-1	1 pair

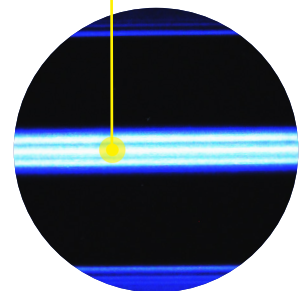


GTS-80A

Single Fiber Fusion Splicer - Core Alignment + Integrated V-groove Deck



Fiber core center



Integrated V-groove deck assures high reliability and vibration-proof



Refreshing User Interface



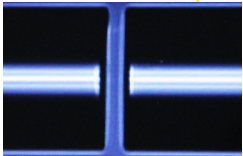
4.3-inch high-resolution touch screen



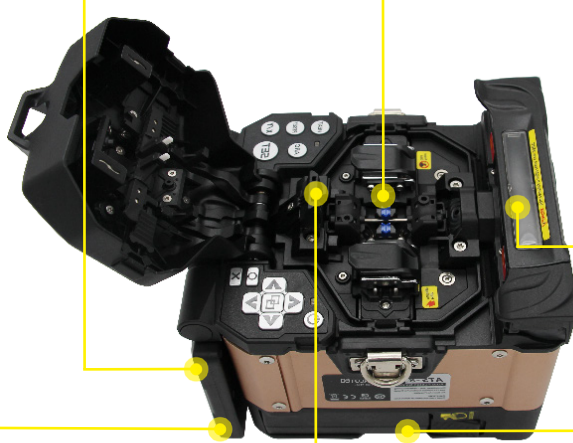
High power LED lights for dark environment



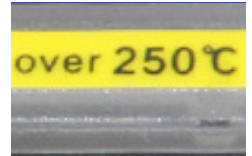
5200mAh battery, more than 280 cycles of splicing and heating



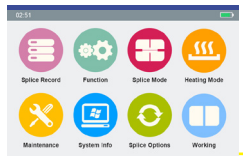
Core alignment



Integrated V-groove deck



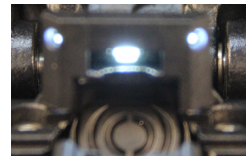
Fast heating up to 15s



4.3 inch touch screen with refreshing UI



Battery capacity with 280 cycles



3 LEDs for dark environment

Specifications

Fiber Alignment Method	Core to core alignment, 4 motors	Illumination	3 high power LED white lights
Fiber Count	Single fiber	Display	Forward/backward switch (button), 4.3 inches 480*272 high resolution color LCD touch screen
Applicable Fiber	SMF (G.652/657), MMF (G.651), DSF (G.653), NZDSF (G.655)	Fiber Image Magnification	X/Y (280X magnification), or both X and Y simultaneously (160X magnification)
Fiber Diameter	250~300um, 900um, 2.0mm, 3.0mm, 2*3mm flat drop cable	Power Supply	100~240VAC, 50/60Hz; 12~15VDC
Fiber Cleaved Length	8~16mm (coating diameter: 125~1000um)	Battery Capacity	5200mAh
Splicing Modes	Total 41 splice modes, can be added by user	Typical Heating Times	280 cycles
Splicing Time	8sec SM FAST	Electrode Life	3,000 ~ 3600 splices
Typical Splice Loss	0.02dB (SM), 0.01dB (MM), 0.05dB (DSF) and 0.05dB (NZDS)	Adaptive discharge	Automatic ARC calibration according to air pressure and temperature
Estimated Splice Loss	yes	Terminal	Mini USB 2.0
Return Loss	≥60dB	Operating Condition	Altitude: 0~5,000m, relative humidity: 0~95%, temperature: -10~50 C , Max. wind velocity: 15m/s
Typical Heating Time	15s with 60mm sleeve	Storage Environment	Relative humidity: 0~95%, temperature: -40~80 C
Protective Sleeve Length	20~60mm	Dimension (W*L*H)	140*165*148mm (with rubber housing); 130*165*138mm (without rubber housing)
Tension Test	1.5~2.0N	Weight	Splicer weight: 2.28kg (with rubber housing); 1.98kg (without rubber housing)
Storage of Splice Results	1,000 latest records		

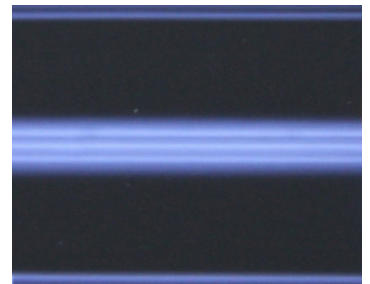
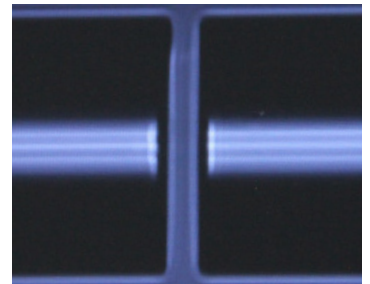
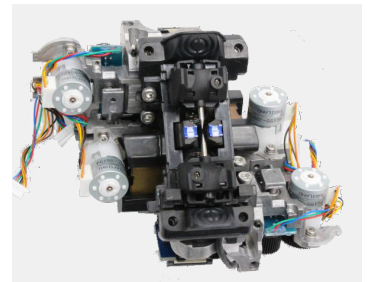
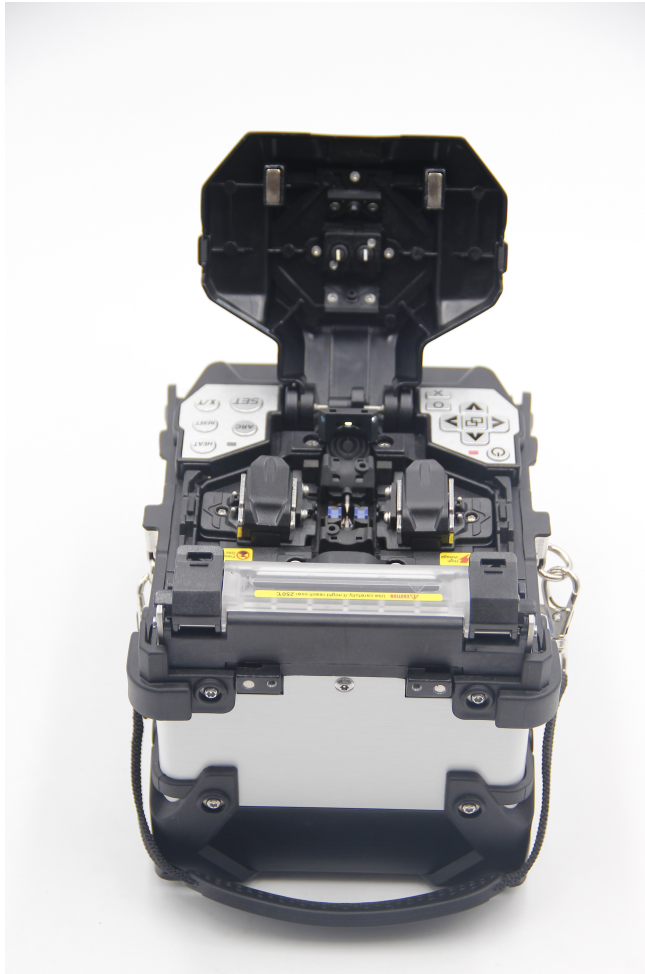
Package

1	Fusion splicer	GTS-80A	1pc
2	Fiber cleaver	ATC-6	1pc
3	Battery	TPW-52	1pc
4	Power adapter	DSS28-1262000	1pc
5	Power cord	APC-XX XX: 1=US/JP;2=UK;3=EU; 4=AU	1pc
6	Spare electrodes	ATE-1	1 pair
7	Cooling tray	ATT-1	1pc
8	Alcohol bottle	AB-10	1pc
9	Brush	BR-01	1pc
10	Phillips screwdriver	PS-01	1pc
11	Manual	ATM-80A	1pc
12	Carrying case	CC-01	1pc
13	Carrying case strap	CCS-01	1pc
14	Fiber optic stripper (optional)	CFS-2	1pc
15	Drop cable stripper (optional)	S30	1pc
16	Kevlar scissors (optional)	FKS-1	1 pair



GTS-A6

Single Fiber Fusion Splicer - Core Alignment + Integrated V-groove Deck



Integrated V-groove deck assures high reliability and vibration-proof



Refreshing User Interface



Rigid carrying case with workstation



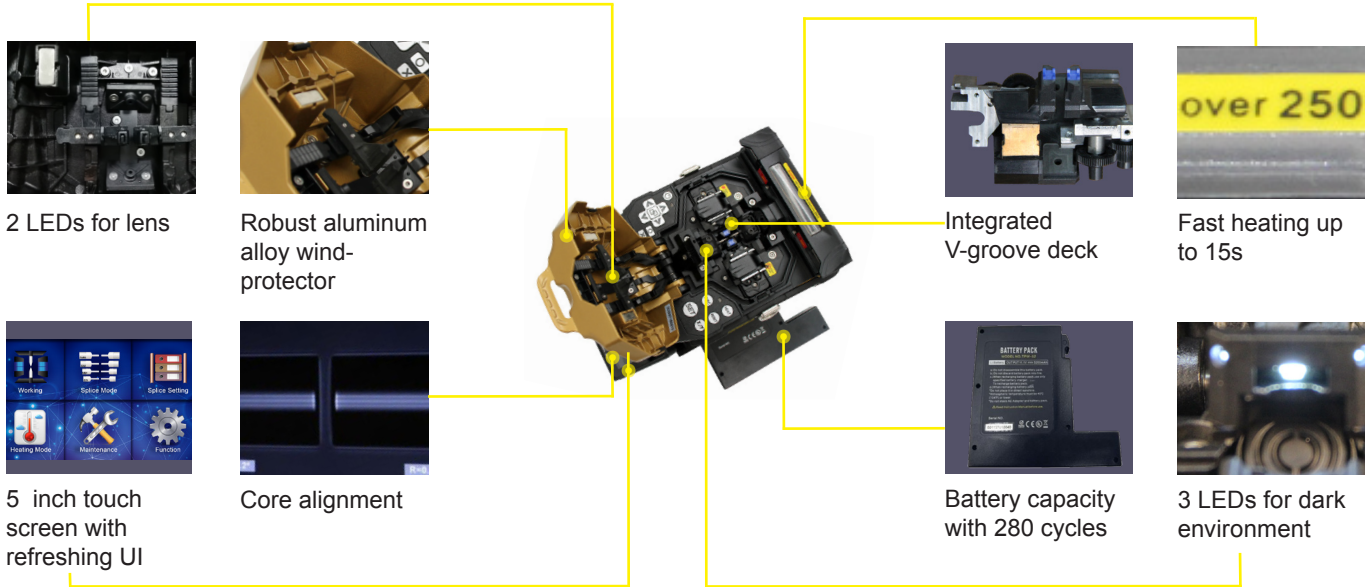
5-inch 800*480 high-resolution touch screen



5200mAh battery, more than 280 times of splicing and heating



High accurate mold and fine coating housing



Specifications

Fiber Alignment Method	Core to core alignment, 6 motors	Return Loss	≥60dB	Battery Capacity	5200mAh
Fiber Count	Single fiber	Typical Heating Time	15s with 60mm sleeve	Typical Heating Times	280 cycles
Applicable Fiber	SMF (G.652/657), MMF (G.651), DSF (G.653), NZDSF (G.655)	Protective Sleeve Length	20~60mm	Electrode Life	3,000 ~ 3600 splices
Fiber Diameter	250~300um, 900um, 2.0mm, 3.0mm, 2*3mm flat drop cable	Tension Test	1.5~2.0N	Adaptive discharge	Automatic ARC calibration according to air pressure and temperature
Fiber Cleaved Length	8~16mm (coating diameter: 125~1000um)	Storage of Splice Results	1,000 latest records	Terminal	Mini USB 2.0
Splicing Modes	Total 41 splice modes, can be added by user	Illumination	3 high power LED white lights	Operating Condition	Altitude: 0~5,000m, relative humidity: 0~95%, temperature: -10~50℃, Max. wind velocity: 15m/s
Splicing Time	8sec SM FAST	Display	Forward/backward switch (button), 5 inches 800*480 high resolution color LCD touch screen	Storage Environment	Relative humidity: 0~95%, temperature: -40~80℃
Typical Splice Loss	0.02dB (SM), 0.01dB (MM), 0.05dB (DSF) and 0.05dB (NZDS)	Fiber Image Magnification	X/Y (280X magnification), or both X and Y simultaneously (160X magnification)	Dimension (W*L*H)	140*170*176mm (with rubber housing); 130*170*170mm (without rubber housing)
Estimated Splice Loss	yes	Power Supply	100~240VAC, 50/60Hz; 12~15VDC	Weight	Splicer weight: 2.58kg (with rubber housing); 2.08kg (without rubber housing)

Package

1	Fusion splicer	GTS-A6	1pc
2	Fiber cleaver	ATC-6	1pc
3	Battery	TPW-52	1pc
4	Power adapter	DSS28-1262000	1pc
5	Power cord	APC-XX XX: 1=US/JP;2=UK;3=EU; 4=AU	1pc
6	Spare electrodes	ATE-1	1 pair
7	Cooling tray	ATT-1	1pc
8	Alcohol bottle	AB-10	1pc
9	Brush	BR-01	1pc
10	Phillips screwdriver	PS-01	1pc
11	Manual	ATM-A6	1pc
12	Carrying case	CC-02	1pc
13	Carrying case strap	CCS-02	1pc
14	Fiber optic stripper (optional)	CFS-2	1pc
15	Drop cable stripper (optional)	S30	1pc
16	Kevlar scissors (optional)	FKS-1	1 pair

